

23 liter gas fryers

The Electrolux 900-Line of modular cooking equipment is designed to meet the heavy duty cooking requirements of institutional caterers and the larger restaurants and hotel kitchens. The flexibility of the modular design, with innumerable configurations either free-standing, bridged or cantilever, can be precisely tailored to meet the needs of the caterer. The models detailed on this sheet are 23 liter gas fryers, the model 210361 is a gas tube fryer particularly recommended for the floured product.



210340

EASY TO INSTALL

- All models can be installed on cantilever system.
- Main connections can be via the base of the unit.
- All models provided with service duct to facilitate installation.
- Feet in stainless steel 50 mm adjustables in height.

EASY TO CLEAN

- Worktop in 20/10, stainless steel.
- Front, side, rear and bottom panels in stainless steel with Scotch Brite finish.
- All models have right-angled side edges to allow flush-fitting joints between units, eliminating gaps and possible dirt traps.

- The special design of the control knob system guarantees against water infiltration.
- The "V" shaped wells have the burners attached to the outside allowing an increased life of the oil, greater productivity and an easier cleaning (except for model 210361 where the gas tubes are internal).

EASY TO USE

- Units are 93 cm deep to give an unusually large working surface area.
- Burners in stainless steel with optimized combustion, flame failure device and protected pilot light. Piezo ignition.

- Working temperature from 120°C to 190°C (from 110°C to 190°C for the model 210361).
- Additional overheat safety thermostat.
- The units are supplied, as standard, with 2 half baskets for each well.
- All gas appliances are supplied for use with natural gas, with LPG conversion jets supplied as standard.



Electrolux

Elco 900
23 liter gas fryers

EASY TO MAINTAIN

- Oil drainage via a tap into a drainage container positioned under the well thus simplifying the consumed oil management and guaranteeing the operator safety.
- IPX5 water protection.

EASY ON THE ENVIRONMENT

- 98% recyclable by weight.
- CFC free packaging.

	ZFRSG1SVEX 210340	ZFRSG2DVEX 210341	ZFRSG1SIN 210361
TECHNICAL DATA			
Power supply	Gas	Gas	Gas
External dimensions - mm			
width	400	800	400
depth	930	930	930
height	850	850	1200
height adjustment	50	50	50
N° of wells	1	2	1
Usable well dimensions - mm			
width	340	340	350
depth	400	400	400
height	575	575	365
Thermocouple safety valve	●	●	●
Temperature limiter			●
Power - kW			
gas	20	40	19
Net weight - kg.	57	115	65
INCLUDED ACCESSORIES			
2 HALF SIZE BASKETS FOR HD FRYERS	1	2	1
LEFT SIDE DOOR FOR OPEN BASE CUPBOARD		1	
REAR FLUE UPSTAND FOR SMALL CHIMNEY			1
RIGHT SIDE DOOR FOR OPEN BASE CUPBOARD	1	1	1
ACCESSORIES			
1 FULL SIZE BASKET FOR HD 900 FRYERS	927226	927226	927226
2 HALF SIZE BASKETS FOR HD FRYERS	927223	927223	927223
2 SIDE COVERING PANELS H=700 D=900	216134	216134	216134
2 SIDE KICKING STRIPS	206180	206180	206180
2 SIDE KICKING STRIPS F.CONCRETE INSTAL.			206157
4 FEET FOR CONCRETE INSTALLATION			206210
4 WHEELS (2 WITH BRAKE)		206188	
DEFLECTOR FOR FLOURED PRODUCTS-23L FRYER	960645	960645	
DRAUGHT DIVERTER WITH 120 MM DIAMETER	206126		206126
DRAUGHT DIVERTER WITH 150 MM DIAMETER		206132	
EXTENSION FOR OIL DRAINAGE	206209	206209	
FLANGED FEET KIT	206136	206136	
FLUE CONDENSER FOR 1 MODULE DIAM.150MM		206156	
FLUE CONDENSER FOR 1/2 MOD. DIAM.120MM	206155		
FRONT.KICK.STRIP F.CONCRETE INST.1000 MM			206150
FRONT.KICK.STRIP F.CONCRETE INST.1200 MM			206151
FRONT.KICK.STRIP F.CONCRETE INST.1600 MM			206152
FRONT.KICK.STRIP F.CONCRETE INST.400 MM			206147
FRONT.KICK.STRIP F.CONCRETE INST.800 MM			206148
FRONTAL HANDRAIL 1200 MM	216049	216049	216049
FRONTAL HANDRAIL 1600 MM	216050	216050	216050
FRONTAL HANDRAIL 400 MM	216046	216046	216046
FRONTAL HANDRAIL 800 MM	216047	216047	216047
FRONTAL KICKING STRIP 1000 MM			206177
FRONTAL KICKING STRIP 1200 MM			206178
FRONTAL KICKING STRIP 1600 MM			206179
FRONTAL KICKING STRIP 400 MM			206175
FRONTAL KICKING STRIP 800 MM			206176
FRONTAL KICKING STRIP FOR 23 LT FRYER	206203	206203	
HYGIENIC LID FOR 23 LT FRYERS	206201	206201	206201
JUNCTION SEALING KIT	206086	206086	206086
LARGE HANDRAIL(PORTIONING SHELF)400 MM	216185	216185	216185
LARGE HANDRAIL(PORTIONING SHELF)800 MM	216186	216186	216186
LEFT SIDE DOOR FOR OPEN BASE CUPBOARD	216195	216195	216195
MATCHING RING FOR FLUE CONDENSER 150DIAM		206133	
OIL FILTER FOR FRYERS	206143	206143	206143
PAIR OF COVERING STRIPS FOR END ELEMENTS	216234	216234	216234
PRESSURE REGULATOR FOR GAS UNITS	927225	927225	927225
REAR FLUE UPSTAND FOR LARGE CHIMNEY		206160	
REAR FLUE UPSTAND FOR SMALL CHIMNEY	206159		
RIGHT SIDE DOOR FOR OPEN BASE CUPBOARD	216194	216194	216194
SEDIMENT TRAY FOR 23 LT FRYER	206173	206173	
SIDE HANDRAIL-RIGHT/LEFT HAND	216044	216044	216044
SUPPORT FOR "BRIDGE" SYSTEM 1000 MM	206138	206138	206138
SUPPORT FOR "BRIDGE" SYSTEM 1200 MM	206139	206139	206139
SUPPORT FOR "BRIDGE" SYSTEM 1400 MM	206140	206140	206140
SUPPORT FOR "BRIDGE" SYSTEM 1600 MM	206141	206141	206141
SUPPORT FOR "BRIDGE" SYSTEM 400 MM	206154	206154	206154
SUPPORT FOR "BRIDGE" SYSTEM 800 MM	206137	206137	206137
UNCLOGGING ROD F.23LT FRYER DRAIN.PIPE	927227	927227	

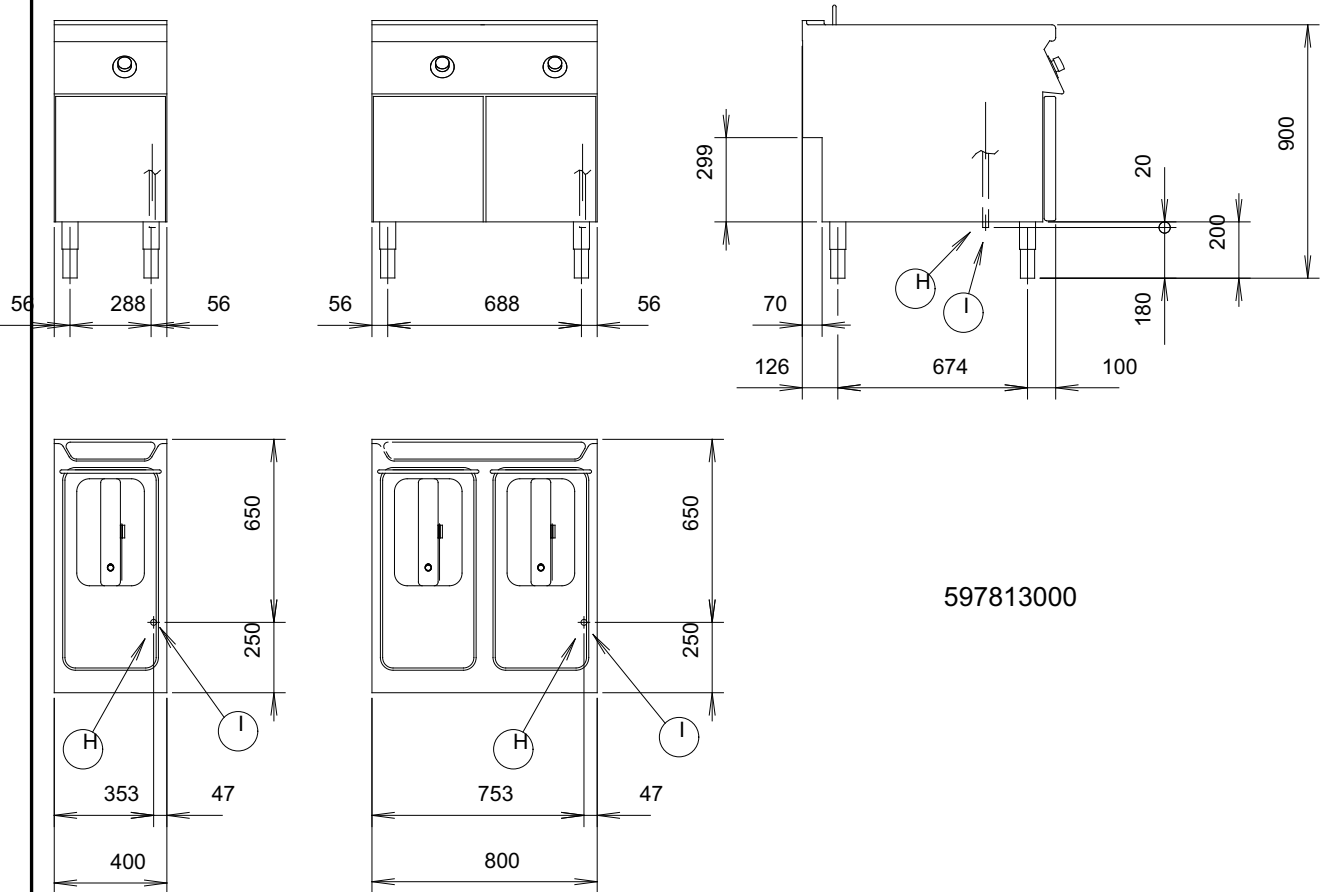
CANB010

2008-12-18

Subject to change without notice

Elco 900
23 liter gas fryers

210340, 210341



LEGEND	ZFRSG1SVEX 210340	ZFRSG2DVEX 210341
	H - Gas connection	3/4"

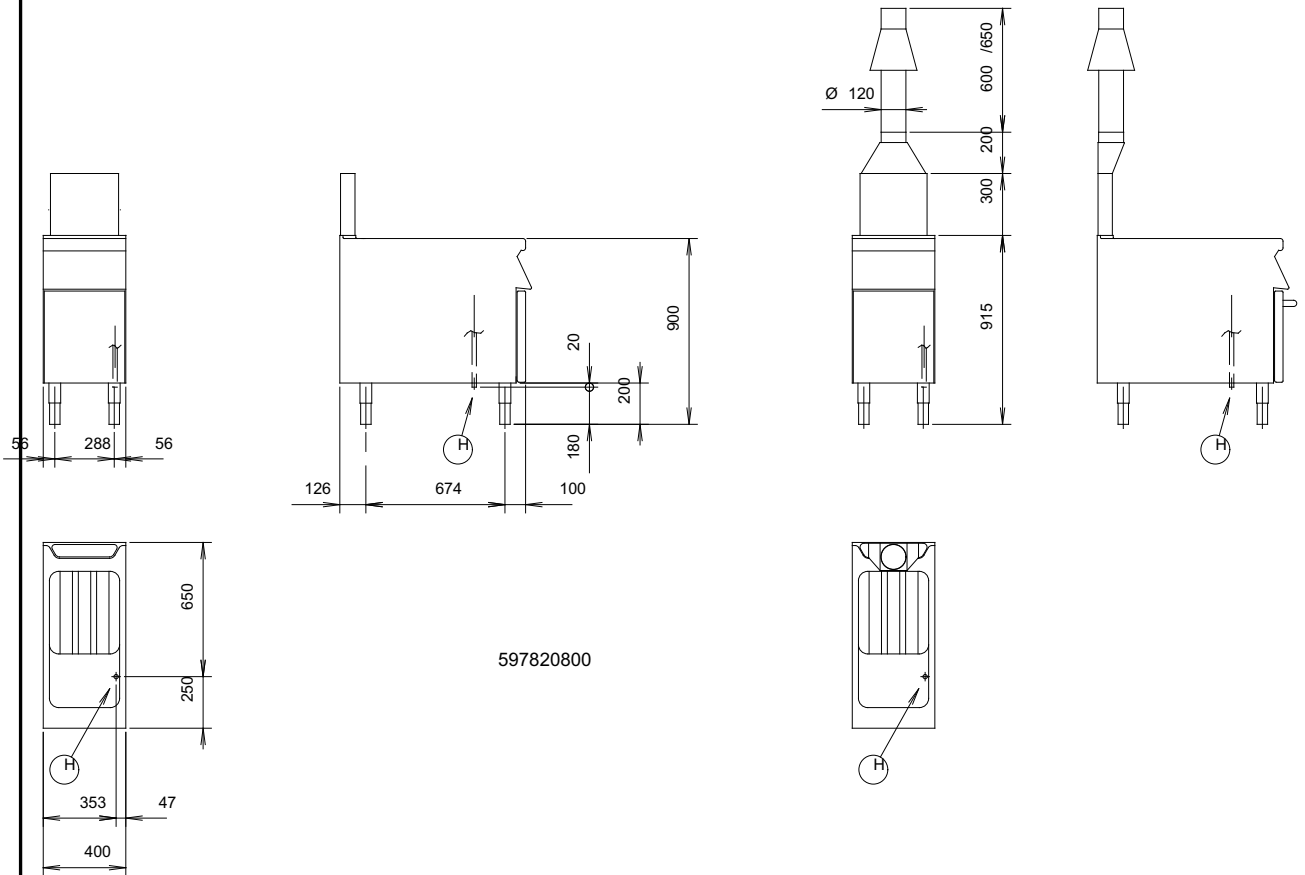
CANB010

2008-12-18

Subject to change without notice

Elco 900
23 liter gas fryers

210361



LEGEND

H - Gas connection

ZFRSG1SIN
210361

3/4"

CANB010

2008-12-18

Subject to change without notice