

## Undercounter Dishwashers WT4

The Electrolux Dishwashing range is produced for the customer with highest conceivable demands for good efficiency, economy and ergonomics for dishwashing operation. The product range comprises of glasswashers, undercounter dishwashers, hood type dishwashers, rack type dishwashers, flight type dishwashers and pot and pan washers.

The undercounter dishwasher WT4 range consists of 5 units with or without drainpump for hotwater connection and with a capacity of 30 baskets per hour.



400007

### EASY TO INSTALL AND MAINTAIN

- The WT4 require 5,35 kW or 3,65 kW, according to the installed boiler heating elements.
- Equipped with drain pump if required to facilitate installation.
- Rinse booster pump available to be installed on site.
- Required space the same as a conventional domestic dishwasher.
- Simple service from the front.
- External connecting board protected by a waterproof plastic box.
- WT4 has smooth surfaces and a wash tank with rounded corners to facilitate cleaning.
- Wash/rinse arms and filter easy to remove.

- The external panels are in AISI 304 stainless steel for easier cleaning and hygienic reasons.

### EASY TO USE

- Built-in rinse water heater to increase the temperature of the final rinse water.
- Capacity of washing dishes for 50-75 meals in one hour.
- Built-in rinse aid dispenser and box for a perfect rinsing result.
- Simple control panel.
- One dishwashing program.
- Washing system with endowed rotating washing arms, filter systems, large capacity wash pump and tank volume, all together designed for professional washing with high performance.

### CONSTRUCTION FEATURES

- Completely closed in the back side by a cover plate.
- All models finished in top quality materials to aid durability.
- In compliance with CE requirements.

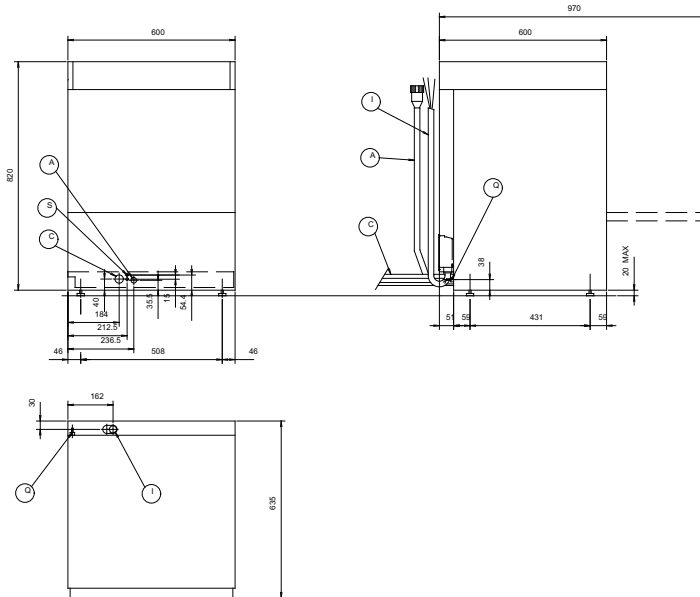
### EASY ON THE ENVIRONMENT

- 98% recyclable by weight.
- CFC free packaging.
- Low noise level <60dBA.
- Developed and produced in ISO 9001 and ISO 14001 certified factory.



**Electrolux**

400007, 400015, 400042, 400009, 400008



Electrolux Dishwashing

Undercounter Dishwashers WT4

IBA020

2007-06-05

Subject to change without notice

	WT4 400007	WT4B 400008	WT4D 400009	WT4D6 400042	WT4DB 400015
<b>LEGEND</b>					
A - Hot water inlet	G 3/4"	G 3/4"	G 3/4"	G 3/4"	G 3/4"
C - Water drain	40 mm	40 mm	20.5mm	20.5mm	20.5mm
I - Electrical connection	230 V, 1N, 50	400 V, 3N, 50	230 V, 1N, 50	230 V, 1N, 60	400 V, 3N, 50
S - Connection for detergent dispenser	1	1	1	1	1
<b>TECHNICAL DATA</b>					
Drain pump			●	●	●
N° of cycles		1	1	1	1
Dishes capacity/h	540	540	540	540	540
Basket capacity/h	30	30	30	30	30
External dimensions - mm					
width	600	600	600	600	600
depth	600	600	600	600	600
height	820	820	820	820	820
Duration cycles - sec.	120	120	120	120	120
Cell dimensions - mm					
width	500	500	500	500	500
depth	500	500	500	500	500
height	330	330	330	330	330
Washing cycle					
temperature - °C	55-65	55-65	55-65	55-65	55-65
tank capacity - lt.	33	33	33	33	33
power pump - kW	0.736	0.736	0.736	0.736	0.736
electrical elements - kW	2	2	2	2	2
Hot rinse cycle					
duration - sec.	16	16	16	16	16
temperature during rinse - °C	80-90	80-90	80-90	80-90	80-90
water consumption - lt./cycle	3.3	3.3	3.3	3.3	3.3
Boiler capacity - lt.	6	6	6	6	6
Boiler elements - kW	2.8	4.5	2.8	2.8	4.5
Water supply					
temperature - °C	50	50	50	50	50
hardness - °f	7-14	7-14	7-14	7-14	7-14
Power - kW					
drain pump			0.034	0.034	0.034
total power	3.65	5.35	3.65	3.65	5.35
Net weight - kg.	60	60	60	60	60
<b>INCLUDED ACCESSORIES</b>					
BASKET FOR 18 DINNER PLATES 240MM-YELLOW	1	1	1	1	1
BASKET FOR 48 SMALL CUPS/24 CUPS-BLUE	1	1	1	1	1
KIT 4 PLASTIC BOXES FOR CUTLERY-YELLOW	1	1	1	1	1
<b>ACCESSORIES</b>					
12 L EXTERNAL MANUAL WATER SOFTENER	860412	860412	860412	860412	860412
8 L EXTERNAL AUTOMATIC WATER SOFTENER	860413	860413	860413	860413	860413
BASKET FOR 5 TRAYS 530X325MM-RED	867006	867006	867006	867006	867006
COVER GRID FOR SMALL/LIGHT ITEMS IN RACK	867016	867016	867016	867016	867016
DETERGENT LEVEL PROBE KIT FOR UC+HT DW	864004	864004	864004	864004	864004
DRAIN PUMP KIT FOR 50HZ DISHWASHERS	864012	864012			
EXT.REVERSE OSMOSIS FILT-PRESSURE BOILER	864027	864027	864027	864027	864027
FILTER FOR PARTIAL DEMINERALIZATION	864017	864017	864017	864017	864017
FILTER FOR TOTAL DEMINERALIZATION	864015	864015	864015	864015	864015
HACCP PRINTER KIT FOR UC, HT AND POTW	864002	864002	864002	864002	864002
INTEGRATED HACCP KIT FOR UC, HT AND POTW	864001	864001	864001	864001	864001
KIT PRESSURE BOOSTER FOR RINSING WATER	860415	860415	860415	860415	860415
KIT TO MEASURE TOTAL/PART.WATER HARDNESS	864050	864050	864050	864050	864050
RINSE AID LEVEL PROBE KIT FOR UC+HT DW	864005	864005	864005	864005	864005
ST.STEEL WASH TANK FILTER FOR UNDERC.DW	864039	864039	864039	864039	864039
STAND FOR UNDERCOUNTER DISHWASHER	860418	860418	860418	860418	860418