

Freestanding Electric Boiling Pans

The Elco 700HP range is comprised of over 100 models designed to guarantee the highest level of performance, reliability, energy saving, safety standards and ergonomic operation. These concepts are reflected in the total modularity of the range that ensures numerous configurations, either free-standing or bridged. Elco 700HP demonstrates how advanced technology can satisfy the needs of the professional caterer. The models detailed on this sheet are Freestanding Electric Boiling Pans.



178738

EASY TO INSTALL

- Main connections can be accessed via the rear or base of the unit.

EASY TO CLEAN

- One piece pressed worktop in 1,5mm stainless steel with smooth, rounded corners.
- Front panel in stainless steel with Scotch Brite finish.
- All models have right-angled, laser cut side edges to allow flush-fitting joints between units eliminating gaps and possible dirt traps.

EASY TO USE

- Heating elements with energy control, temperature limiter and pressure switch in the electric model.

- Pressed well and lid are in 316 AISI stainless steel thus guaranteeing high resistance to the corrosive action of salt and water.
- Well with rounded corners.
- Great reduction of energy consumption thanks to a pressure switch control on indirect heating models.
- Safety valve guaranteeing a working pressure in accordance with regulations.
- Hot and cold water refilling through a solenoid valve. Water drain through a 1 1/2" tap with athermic handle.
- Feet in stainless steel adjustable in height 50mm.

EASY TO MAINTAIN

- IPX4 water protection.

EASY ON THE ENVIRONMENT

- 98% recyclable by weight.
- CFC free packaging.



Electrolux

Elco 700HP
Freestanding Electric Boiling Pans

	QPNEI861 178738
TECHNICAL DATA	
Power supply	Electric
Pressure switch	●
Water supply	
pressure min. , max. - bar	0.3
External dimensions - mm	
width	800
depth	730
height	850
height adjustment	50
Net vessel useful capacity - Lt.	60
Temperature limiter	●
Vessel dimensions - mm	
diameter	420
Heating type	Indirect
Power - kW	
installed-electric	9.4
Net weight - kg.	100
Supply voltage	400 V, 3N, 50/60
ACCESSORIES	
1-SECTION NOODLE BASKET FOR 60 LT PANS	921626
2 SIDE COVERING PANELS FOR TOP-D=700MM	216277
2 SIDE COVERING PANELS H=700 D=700	216000
2 SIDE KICKING STRIPS-CONCRETE INSTALL.	206265
4 FEET FOR CONCRETE INSTALLATION	206210
CHIMNEY COVER 800MM OPEN-LARGE CHIMNEY	206273
FLANGED FEET KIT	206136
FRONT.KICK.STRIP F.CONCRETE INST.1000 MM	206150
FRONT.KICK.STRIP F.CONCRETE INST.1200 MM	206151
FRONT.KICK.STRIP F.CONCRETE INST.1600 MM	206152
FRONT.KICK.STRIP F.CONCRETE INST.200 MM	206146
FRONT.KICK.STRIP F.CONCRETE INST.400 MM	206147
FRONT.KICK.STRIP F.CONCRETE INST.800 MM	206148
FRONTAL HANDRAIL 1200 MM	216049
FRONTAL HANDRAIL 1600 MM	216050
FRONTAL HANDRAIL 400 MM	216046
FRONTAL HANDRAIL 800 MM	216047
FRONTAL KICKING STRIP 1000 MM	206177
FRONTAL KICKING STRIP 1200 MM	206178
FRONTAL KICKING STRIP 1600 MM	206179
FRONTAL KICKING STRIP 200 MM	206174
FRONTAL KICKING STRIP 400 MM	206175
FRONTAL KICKING STRIP 800 MM	206176
LARGE HANDRAIL(PORIONING SHELF)400 MM	216185
LARGE HANDRAIL(PORIONING SHELF)800 MM	216186
PAIR OF SIDE KICKING STRIPS	206249
RIGHT AND LEFT SIDE HANDRAILS	206240

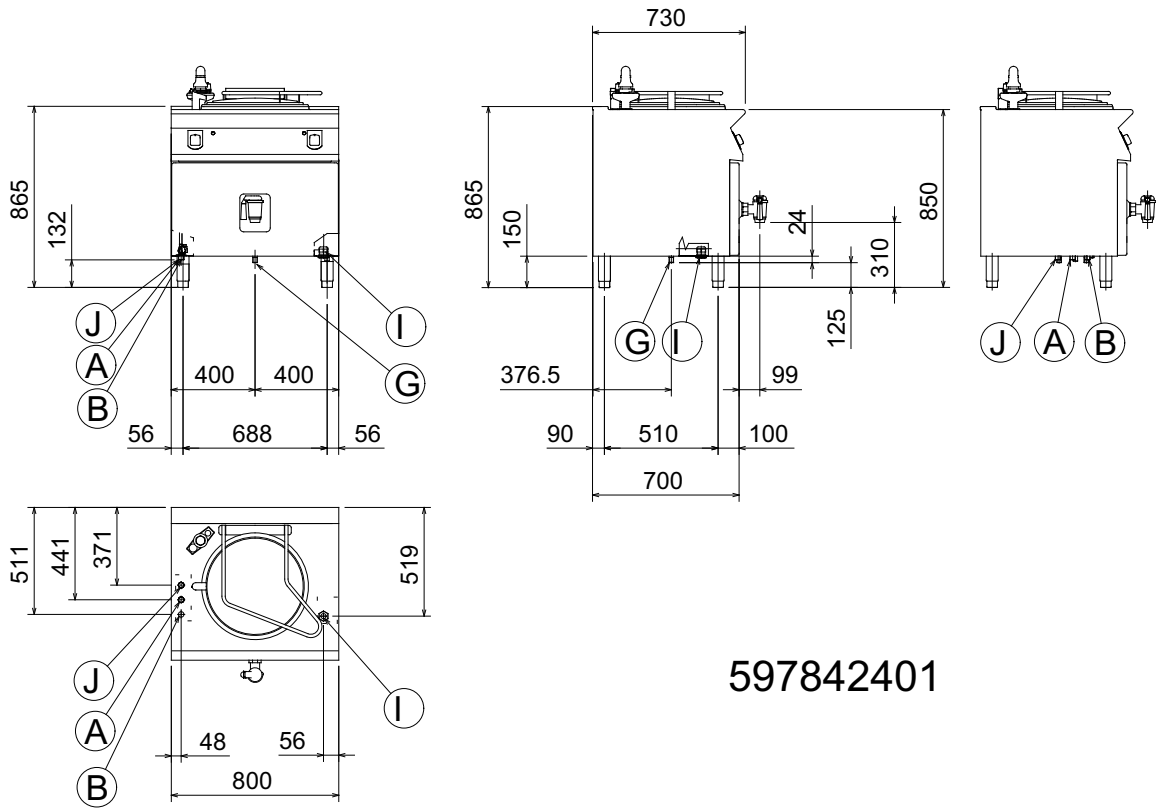
CGOB010

2008-12-20

Subject to change without notice

Elco 700HP
Freestanding Electric Boiling Pans

178738



597842401

LEGEND		QPNEI861 178738
A - Hot water inlet		3/4"
B - Cold water inlet		3/4"
C - Water drain		1"1/2
I - Electrical connection		400 V, 3N, 50/60

CGOB010

2008-12-20

Subject to change without notice