

Hand Wash Basin

Stoddart Hand Wash Basin comes complete with stainless steel splash back to meet current regulations.

Splashback has kicked-back edges for finishing to walls and a rounded bottom edge to provide a clean, safe, hygienic connection to the sink and all designed for easy mounting to most walls.

Model:

WB H1 300 Hand Wash Basin

Complete with Regulation 300mm splash back and new easy mount wall bracket.

Includes 40mm waste outlet.



Features & Benefits;

Approved design for Government Schools.

Safety edges for installer and user protection.

Robust Stainless construction for small washrooms and toilet rooms.

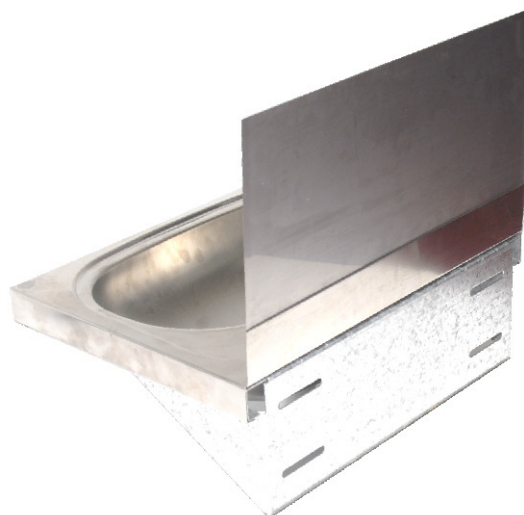
Recessed inner bowl to minimise splash.

Rounded corners for easy cleaning.

New easy mount gal bracket design for safe quick level mounting onto most walls to save valuable labour time.

Holes are pre-drilled for easy fixing to wall with stainless screws.

Stainless steel bracket can be ordered as optional extra.



Hand Wash Basin

Specifications

Construction: Fully pressed, seamless construction.
Stainless steel 304 grade.
Approved government design with safety edges.
Rounded corners on bowl for easy cleaning.
Recessed inner bowl for splash control.
Kick-back edged stainless steel 300mm splash back.
Interlocking bottom edge on splash back for easy, safe and hygienic connection to sink.

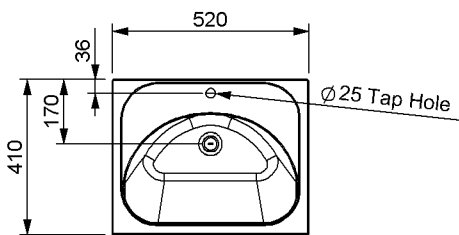
Waste Connection: plastic DN 40 waste supplied.

Unit Fixing: The unit is supplied with 1.6mm galvanised steel easy-fix wall mounting bracket with 10 mm fixing holes.

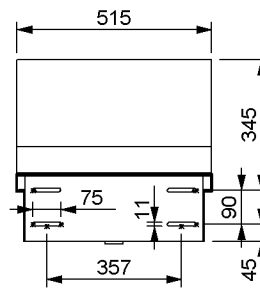
Model:

WB H1 300 Hand Wash Basin

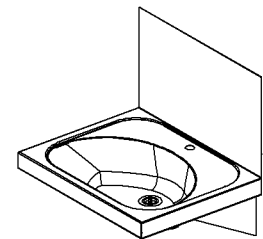
Complete with Regulation 300mm splash back and new easy mount wall bracket.



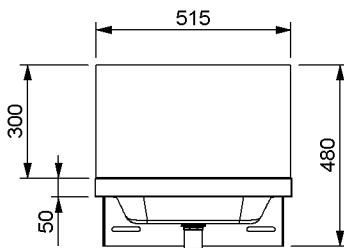
PLAN VIEW



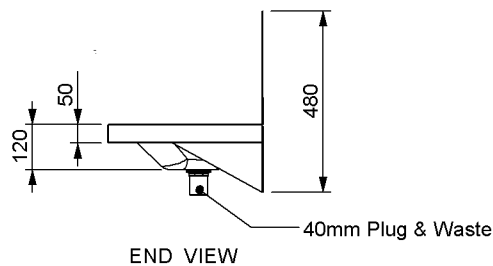
REAR VIEW



ISOMETRIC VIEW



FRONT VIEW



END VIEW

All product specifications are subject to change from time to time. Please confirm you are working from the most current issue. Product Data Sheets are available on our web site www.stoddartplumbing.com.au or on request from our sales office (07) 33455011.